



Emcer®

MARMO DI CERAMICHE

SURFACE

COLLECTIONS 2021



éSLAB
crafted differently

600X1200MM

Index

Indice/
Indice



Company Profile
eslab

Technology

Sizes & Finishes

Feature

Application

Collections

600X1200MM



**No Limits To Space.
No Limits To Design**

Emcer®
MARMO DI CERAMICHE

A never before seen event has happened in the tile industry wherein two giants SOL and Sanford have joined hands for a complete makeover of the ceramic industry. Both these companies have a sole ambition to redo the types of designs and quality floating in the market and present something which is completely new in its design sense and quality standards.

Emcer e-slab the leading manufacturer of e-slabs in India proved there existence in the World Ceramic Industry by achieving heights and reaching to the top in span of two years. Emcer proved that being a Quality and Research oriented organization is the key to success, which Emcer maintained from day one of the production of their e-slabs.

With there Mantra of success, Emcer managed to fill the void between design and quality by fulfilling the both criterias and created a benchmark in the world. With there highly qualified design and research team Emcer managed to achieve the peak by mapping every minute details of the products.

At Emcer -

***" We believe in making the world more beautiful
with best Quality Products and Innovative Designs".***

**Management
Emcer**

www.emcer.in

Everlasting Design Enormous Extra Thin & Light Eco Friendly Eternal Feel

**éSLAB is the true testimony
of modern architecture.**

It is a new architectural concept that goes beyond a single slab: it allows designers to reinvent design criteria, giving them the maximum freedom and a minimum of limitations.

it is a material that combines the established, classical characteristics with new high performance qualities: strength, lightweight, flexibility and durability.

ESLAB allow architects to design a space ranging from simple flooring or coverings for large and small surfaces to object-based applications and furnishing accessories to enhance the world we live in. with eSLAB we have created a world where big is beautiful, with visually expanded spaces, fewer design and endless possibilities. on the one hand the eSLAB drastically reduces the amount of interruptions to the design unit, on the other the range of sub-multiples ensures great versatility for every and all needs.

éSLAB
crafted differently

Emcer
MARMO DI CERAMICHE



formatos y acabados /
formats et finitions

Sizes & Finishes

éSLAB
crafted differently

Emcer®
MARMO DI CERAMICHE





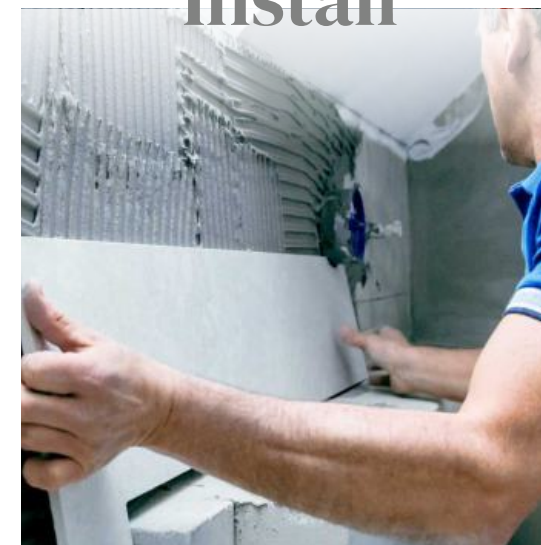
características /
Caractéristiques

Feature

Emcer[®]
MARMO DI CERAMICHE

éSLAB
crafted differently

Easy to Install



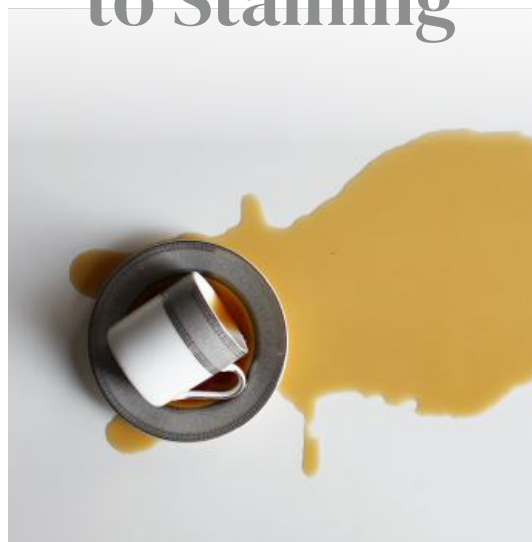
Fácil de instalar /
Facile à installer

Ecology & Sustainable



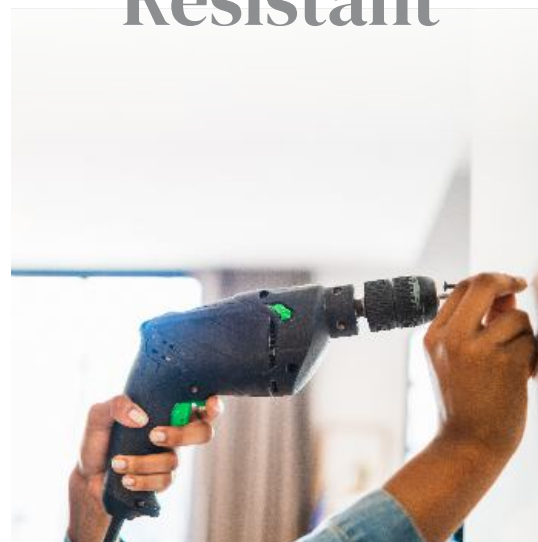
Ecología y Sostenible /
Écologie et Durable

Resistant to Staining



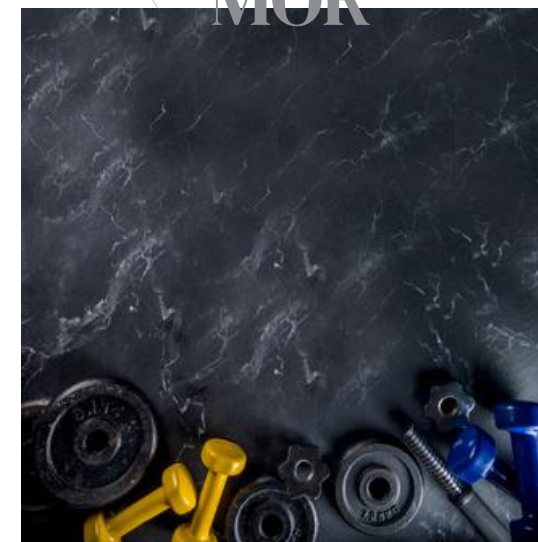
Resistente a las manchas /
Résistant aux taches

Impact Resistant



Resistente al impacto /
Résistant aux chocs

High MOR



Alta MOR /
MOR élevé

Thermal shock Resistant



Resistente al choque térmico /
Résistant aux chocs thermiques

Acid Resistant



Resistente al ácido /
Résistant aux acides

Easy to Clean



Fácil de limpiar /
Facile à nettoyer

Frost Resistant



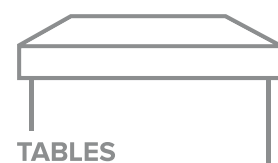
Resistente a las heladas /
Résistant au gel

aplicaciones /
applications

Applications

COUNTERTOPS





Applications

aplicaciones /
applications



aplicaciones /
applications





colecciones /
collections

Collec- tion

eslab allows you to make a custom design for each project, adapting its format to the needs of the space. Modulations and cuts are no longer a limitation, achieving completely unique and exclusive settings.

Emcer[®]
MARMO DI CERAMICHE

éSLAB
crafted differently

**600X
1200MM
BLEND**

www.emcer.in

Oxido
Blue

Size
600X1200MM

Finish
Carving

Random
4

Thickness
5.5MM

Emcer[®]
MARMO DI CERAMICHE



éSLAB | BLEND
crafted differently

Features



Easy to
install



Resistant to
Staining



Impact resistant



High MOR



Thermal shock
resistant



Ecology &
Sustainable



Acid resistant

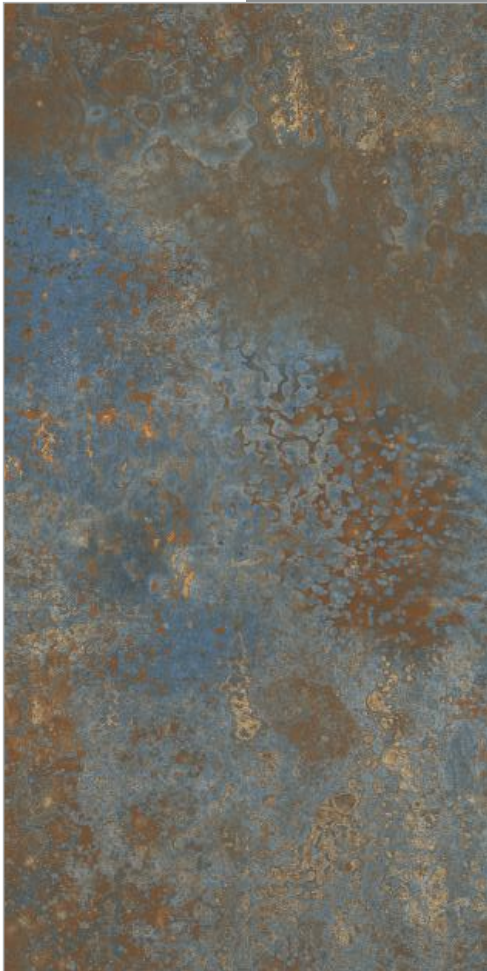
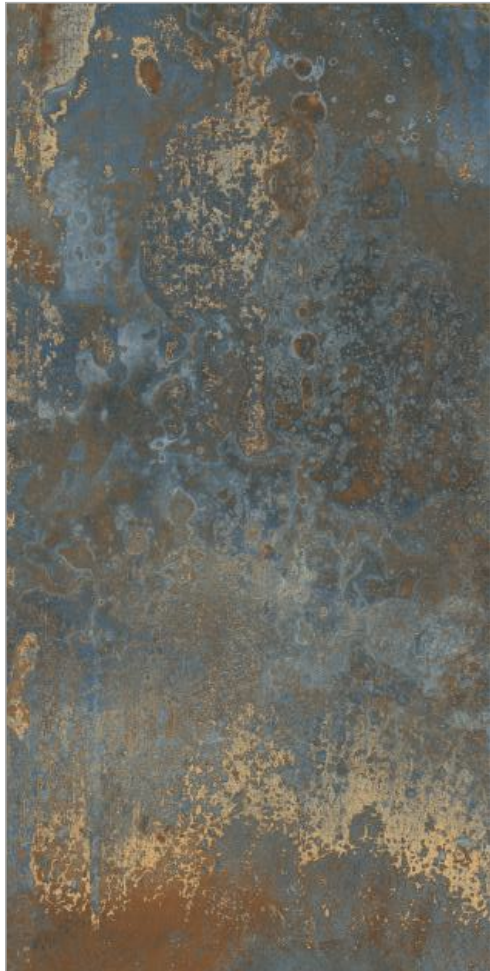


Easy to
clean



Frost
resistant

Oxido
Blue



Size
600X1200MM

Random
4

Finish
Carving

Thickness
5.5MM





Size
600X1200MM

Finish
Carving

Random
3

Thickness
5.5MM

Profidi
Brown



Features

-  Easy to install
-  Resistant to Staining
-  Impact resistant
-  High MOR
-  Thermal shock resistant
-  Ecology & Sustainable
-  Acid resistant
-  Easy to clean
-  Frost resistant



Profidi Brown

Size
600X1200MM

Random
3

Finish
Carving

Thickness
5.5MM



www.emcer.in



Profidi
Gris



Size
600X1200MM

Random
3

Finish
Carving

Thickness
5.5MM

Emcer®
MARMO DI CERAMICHE

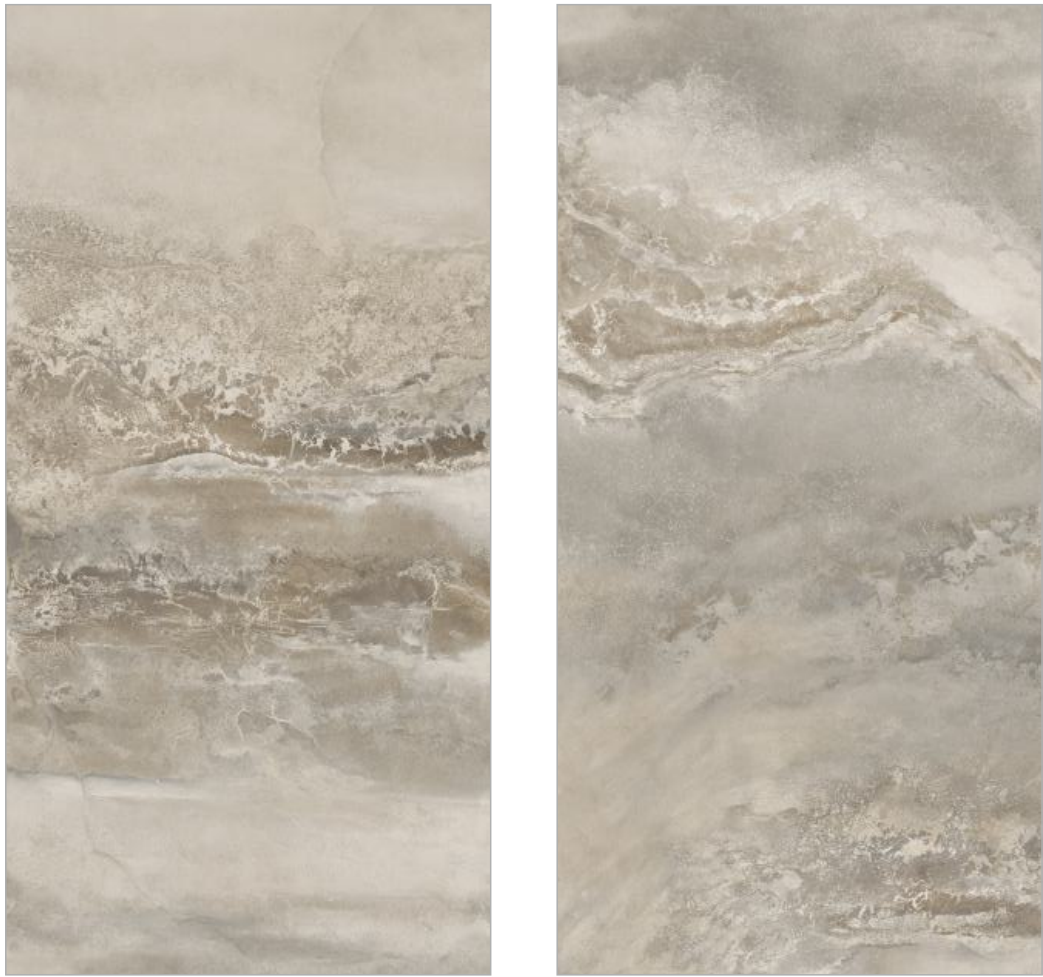


éSLAB | BLEND
crafted differently

Features

- Easy to install
- Resistant to Staining
- Impact resistant
- High MOR
- Thermal shock resistant
- Ecology & Sustainable
- Acid resistant
- Easy to clean
- Frost resistant

Profidi
Gris



Size
600X1200MM

Random
3

Finish
Carving

Thickness
5.5MM

Emcer®
MARMO DI CERAMICHE



éSLAB | BLEND
crafted differently





Size
600X1200MM

Random
3

Finish
Carving

Thickness
5.5MM

Chip Stone Bianco



Features



Easy to
install



Resistant to
Staining



Impact resistant



High MOR



Thermal shock
resistant



Ecology &
Sustainable



Acid resistant



Easy to
clean



Frost
resistant



Chip Stone Bianco

Size
600X1200MM

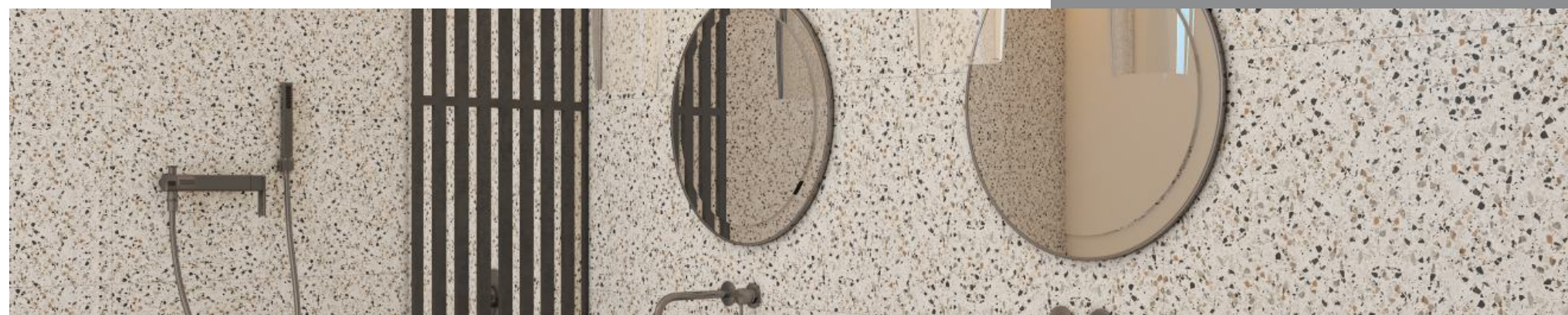
Random
4

Finish
Carving

Thickness
5.5MM



www.emcer.in



Emcer[®]
MARMO DI CERAMICHE

éSLAB
crafted differently

**600X
1200MM
STONIC**



www.emcer.in



Size
600X1200MM

Random
6

Finish
Digi Matt

Thickness
5.5MM

Azure
Bianco



Features



Easy to
install



Resistant to
Staining



Impact resistant



High MOR



Thermal shock
resistant



Ecology &
Sustainable



Acid resistant



Easy to
clean



Frost
resistant



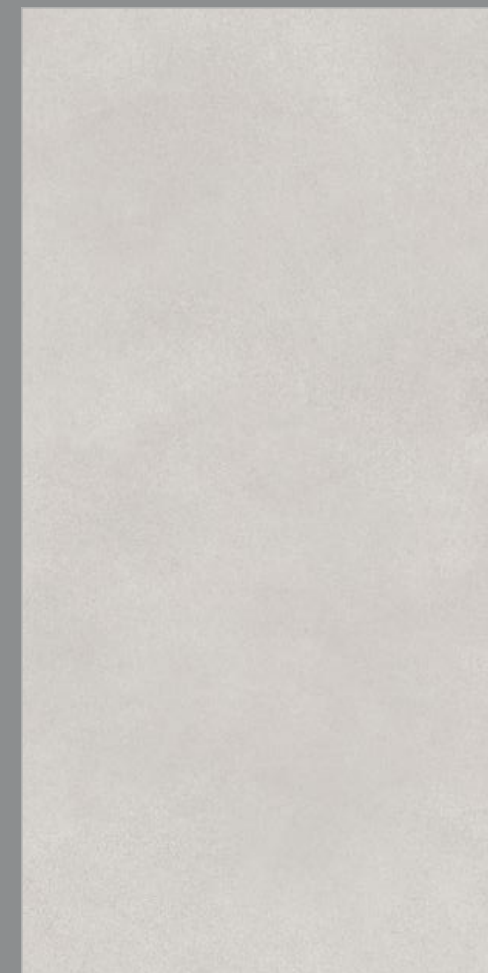
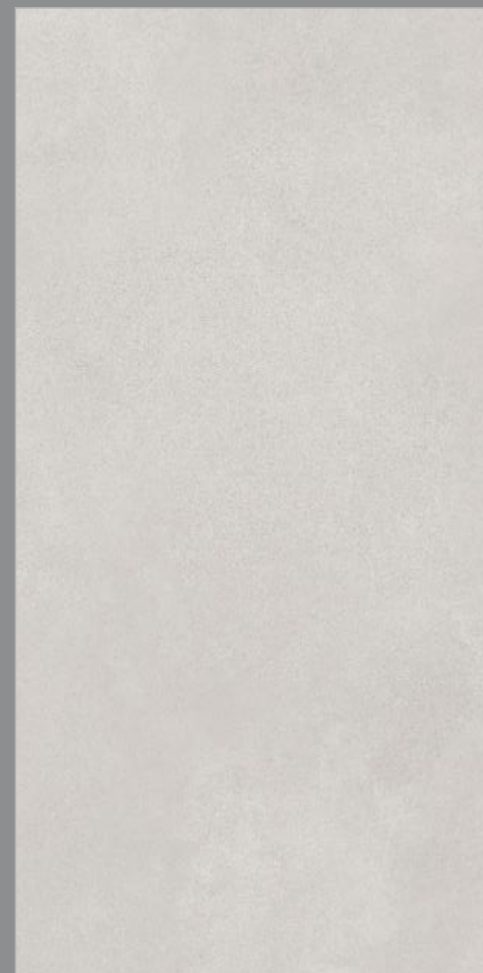
Azure Bianco

Size
600X1200MM

Random
6

Finish
Digi Matt

Thickness
5.5MM



www.emcer.in



Azure
Brown



Size
600X1200MM

Finish
Digi Matt

Random
4

Thickness
5.5MM



Features

- Easy to install
- Resistant to Staining
- Impact resistant
- High MOR
- Thermal shock resistant
- Ecology & Sustainable
- Acid resistant
- Easy to clean
- Frost resistant

Azure
Brown



Size
600X1200MM
Random
4
Finish
Digi Matt
Thickness
5.5MM

éSLAB | STONIC
crafted differently





Size
600X1200MM

Random
4

Finish
Digi Matt

Thickness
5.5MM

Azure Crema



Features



Easy to
install



Resistant to
Staining



Impact resistant



High MOR



Thermal shock
resistant



Ecology &
Sustainable



Acid resistant



Easy to
clean



Frost
resistant



Azure Crema

Size
600X1200MM

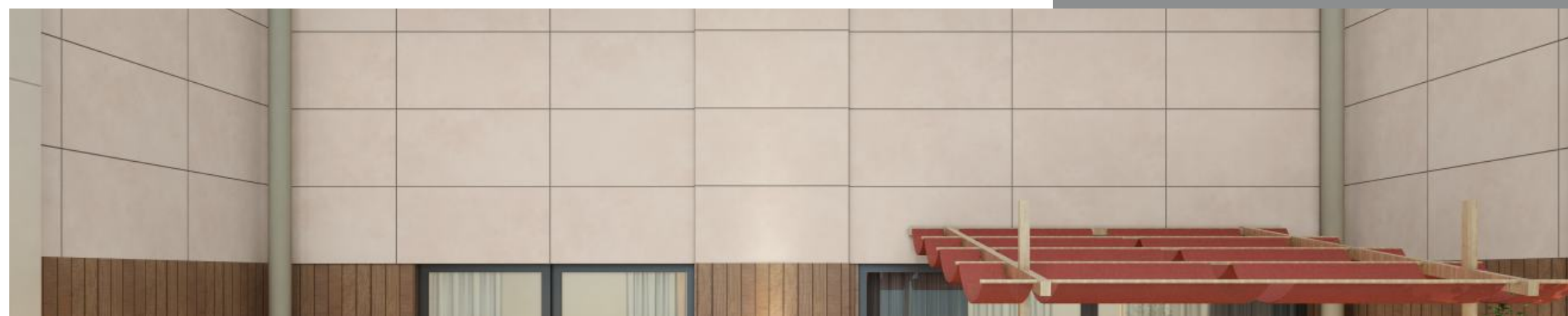
Random
4

Finish
Digi Matt

Thickness
5.5MM



www.emcer.in



Azure
Grey

Size
600X1200MM

Random
4

Finish
Digi Matt

Thickness
5.5MM

Emcer[®]
MARMO DI CERAMICHE



éSLAB | STONIC
crafted differently

Features



Easy to
install



Resistant to
Staining



Impact resistant



High MOR



Thermal shock
resistant



Ecology &
Sustainable



Acid resistant

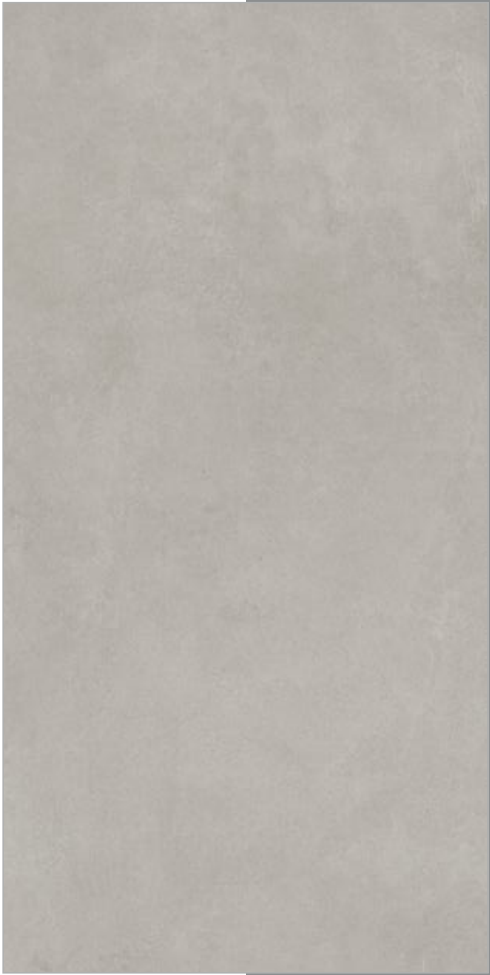


Easy to
clean



Frost
resistant

Azure
Grey



Size
600X1200MM

Random
4

Finish
Digi Matt

Thickness
5.5MM



éSLAB | STONIC
crafted differently





Features



Easy to install



Resistant to Staining



Impact resistant



High MOR



Thermal shock resistant



Ecology & Sustainable



Acid resistant



Easy to clean



Frost resistant



Azure Moca

Size
600X1200MM

Random
4

Finish
Digi Matt

Thickness
5.5MM



www.emcer.in



Azure
Nero



Size
600X1200MM

Random
4

Finish
Digi Matt

Thickness
5.5MM

Emcer[®]
MARMO DI CERAMICHE

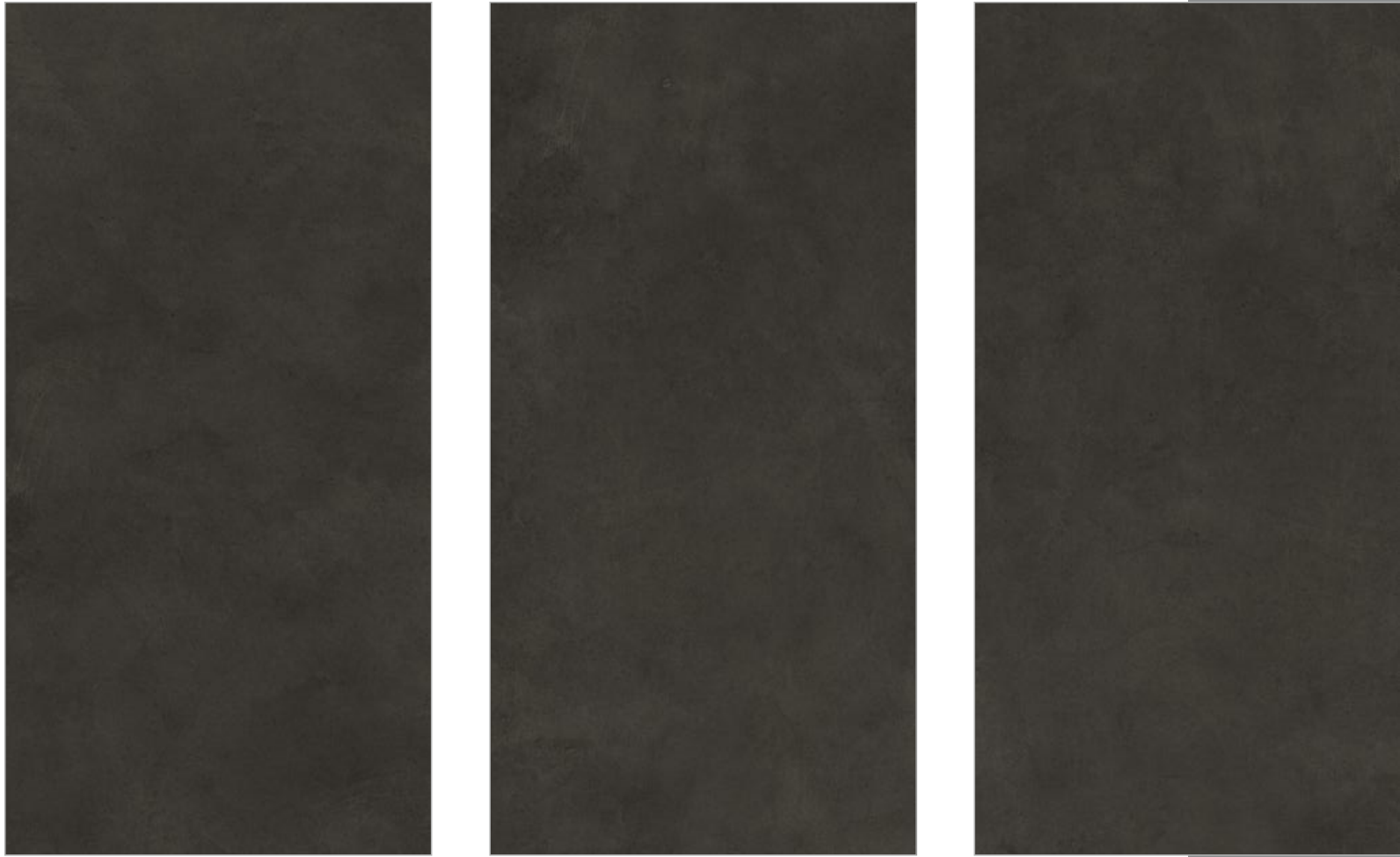


éSLAB | STONIC
crafted differently

Features

- Easy to install
- Resistant to Staining
- Impact resistant
- High MOR
- Thermal shock resistant
- Ecology & Sustainable
- Acid resistant
- Easy to clean
- Frost resistant

Azure
Nero



Size
600X1200MM

Random
4

Finish
Digi Matt

Thickness
5.5MM



éSLAB | STONIC
crafted differently





Size
600X1200MM

Random
4

Finish
Digi Matt

Thickness
5.5MM

Azure
Smoke



Features



Easy to
install



Resistant to
Staining



Impact resistant



High MOR



Thermal shock
resistant



Ecology &
Sustainable



Acid resistant



Easy to
clean



Frost
resistant



Azure Smoke

Size
600X1200MM

Random
4

Finish
Digi Matt

Thickness
5.5MM



www.emcer.in



Azure
Verde



Size
600X1200MM

Finish
Digi Matt

Random
6

Thickness
5.5MM

Emcer®
MARMO DI CERAMICHE



éSLAB | STONIC
crafted differently

Features



Easy to
install



Resistant to
Staining



Impact resistant



High MOR



Thermal shock
resistant



Ecology &
Sustainable



Acid resistant



Easy to
clean



Frost
resistant

Azure
Verde

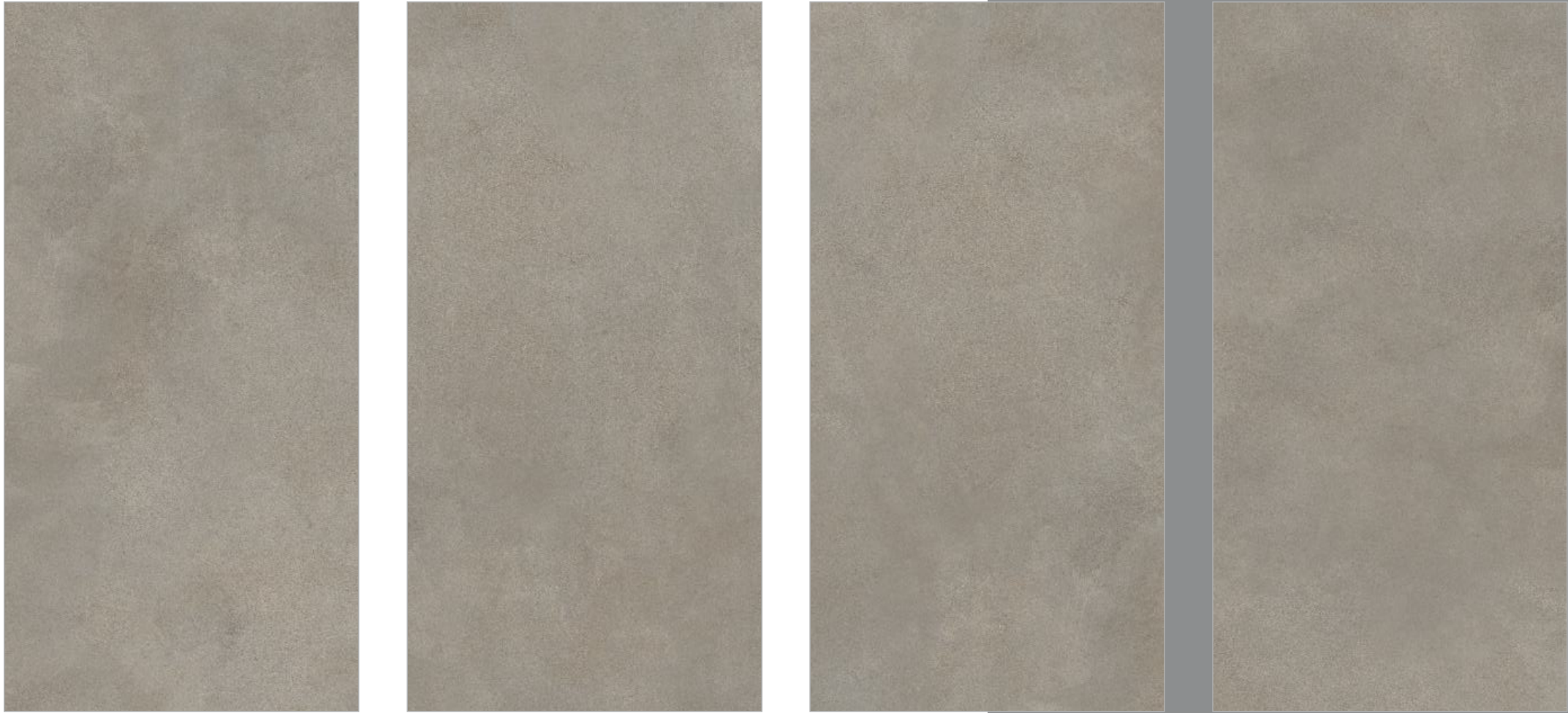


Size
600X1200MM

Random
6

Finish
Digi Matt

Thickness
5.5MM



éSLAB | STONIC

crafted differently





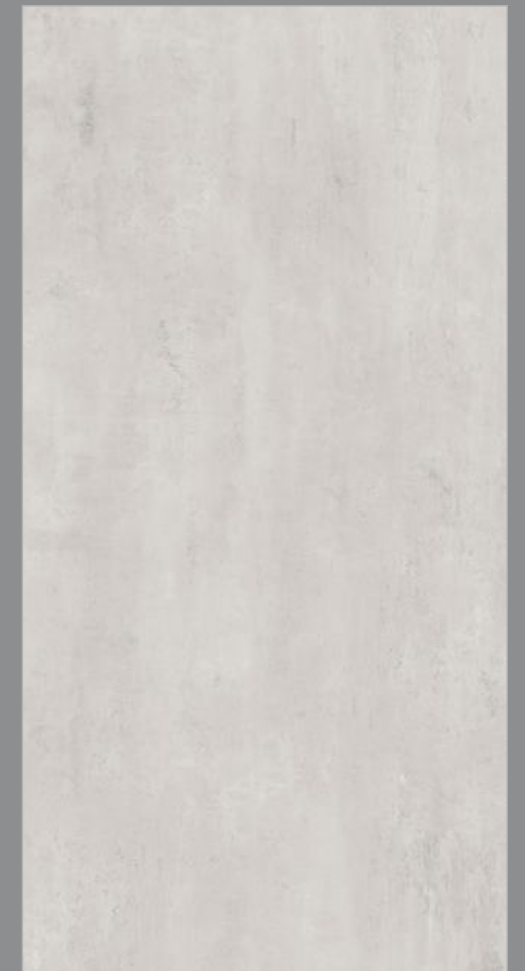
Size
600X1200MM

Random
4

Finish
Digi Matt

Thickness
5.5MM

Emrald
Silver



Features



Easy to
install



Resistant to
Staining



Impact resistant



High MOR



Thermal shock
resistant



Ecology &
Sustainable



Acid resistant



Easy to
clean



Frost
resistant



Emerald Silver

Size
600X1200MM

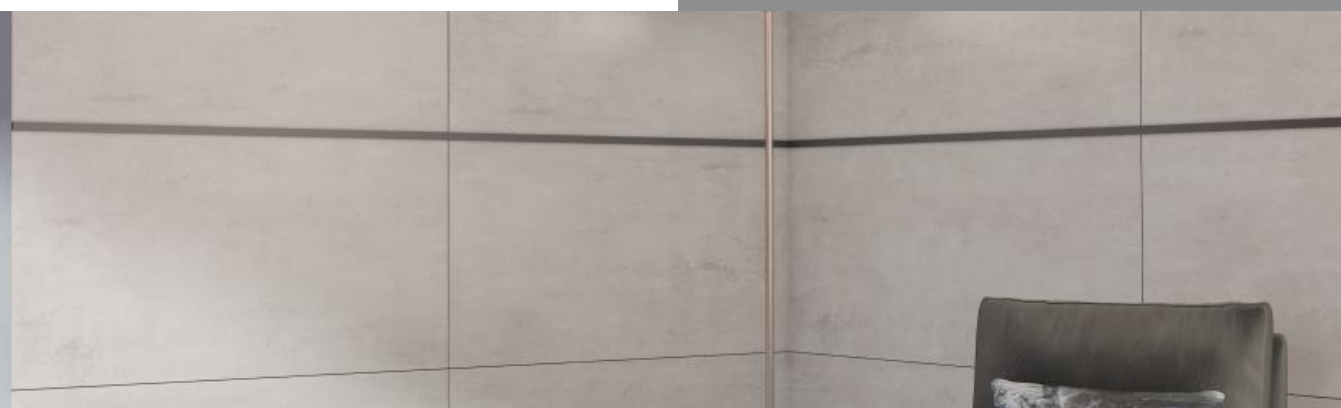
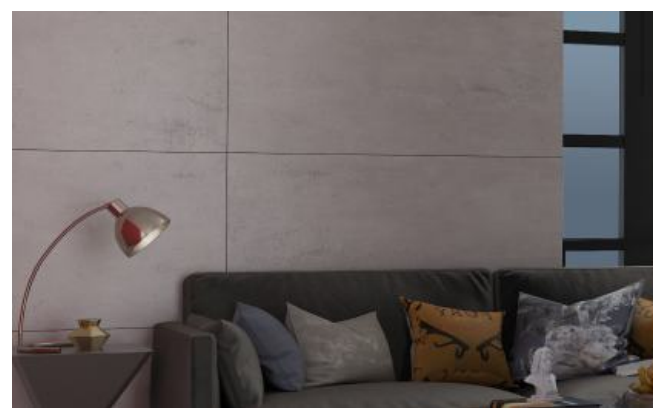
Random
4

Finish
Digi Matt

Thickness
5.5MM



www.emcer.in



Emrald
Grey

Size
600X1200MM

Finish
Digi Matt

Random
4

Thickness
5.5MM

Emcer®
MARMO DI CERAMICHE

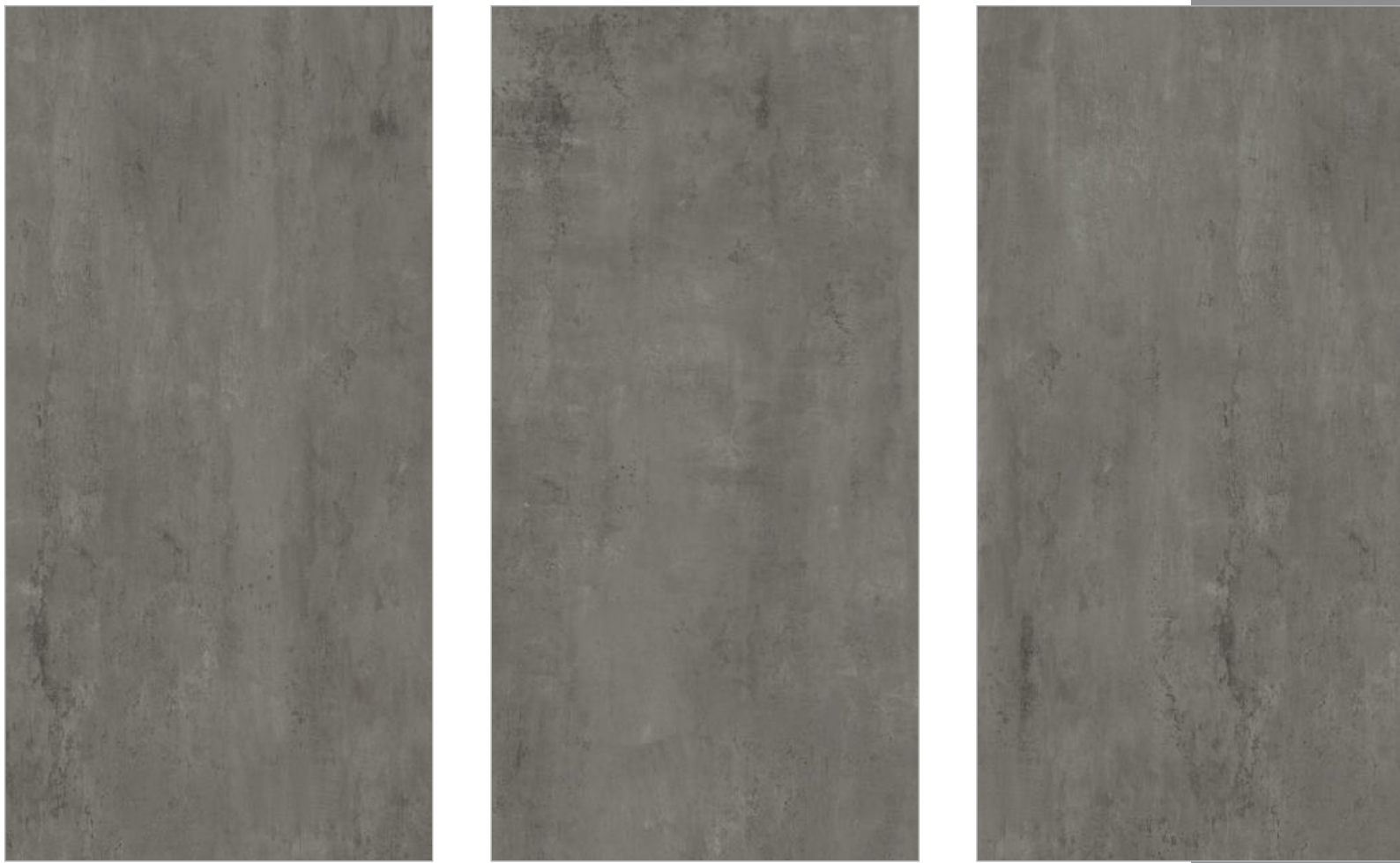


éSLAB | STONIC
crafted differently

Features

- Easy to install
- Resistant to Staining
- Impact resistant
- High MOR
- Thermal shock resistant
- Ecology & Sustainable
- Acid resistant
- Easy to clean
- Frost resistant

Emrald
Grey



Size
600X1200MM

Random
4

Finish
Digi Matt

Thickness
5.5MM



éSLAB | STONIC

crafted differently





Size
600X1200MM

Random
4

Finish
Digi Matt

Thickness
5.5MM

Emrald
Nero



Features

- Easy to install
- Resistant to Staining
- Impact resistant
- High MOR
- Thermal shock resistant
- Ecology & Sustainable
- Acid resistant
- Easy to clean
- Frost resistant



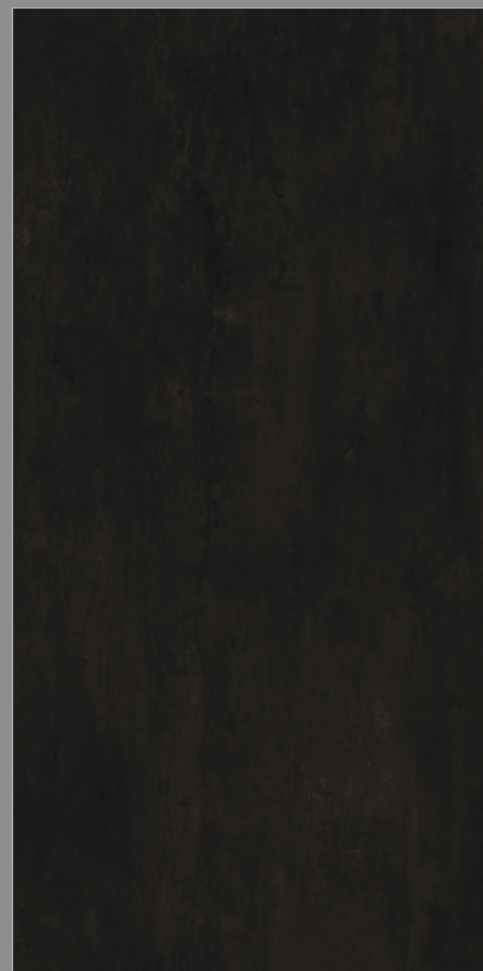
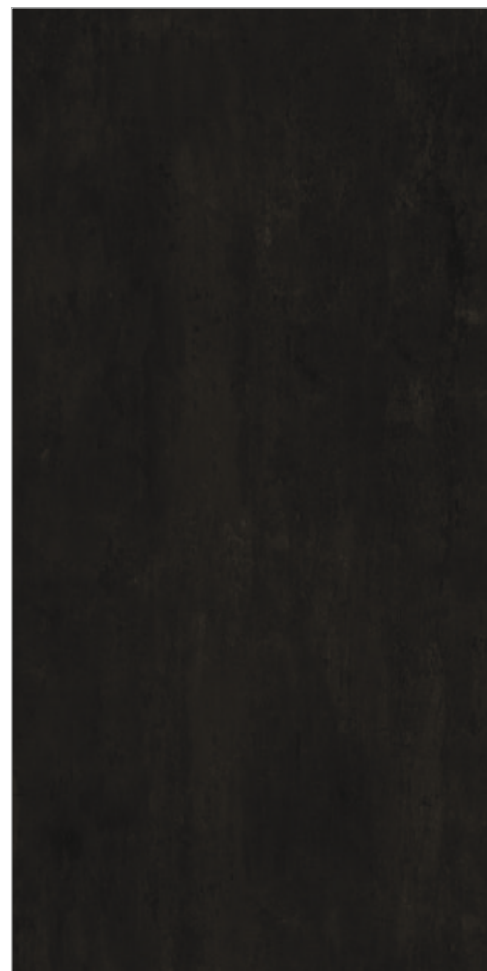
Emrald Nero

Size
600X1200MM

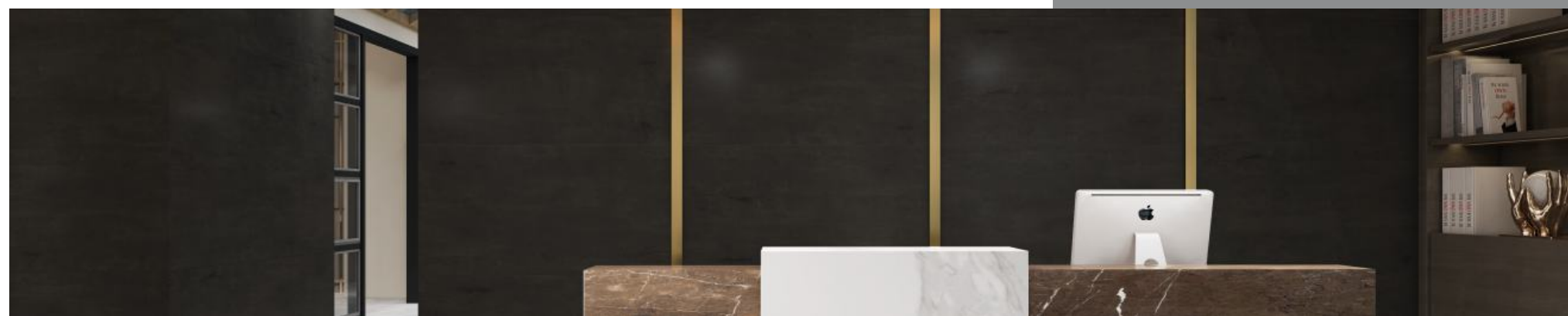
Random
4

Finish
Digi Matt

Thickness
5.5MM



www.emcer.in



Slate
Natural



Size
600X1200MM

Finish
Digi Matt

Random
1

Thickness
5.5MM

Emcer®
MARMO DI CERAMICHE



éSLAB | STONIC
crafted differently

Features



Easy to
install



Resistant to
Staining



Impact resistant



High MOR



Thermal shock
resistant



Ecology &
Sustainable



Acid resistant



Easy to
clean



Frost
resistant



Size
600X1200MM

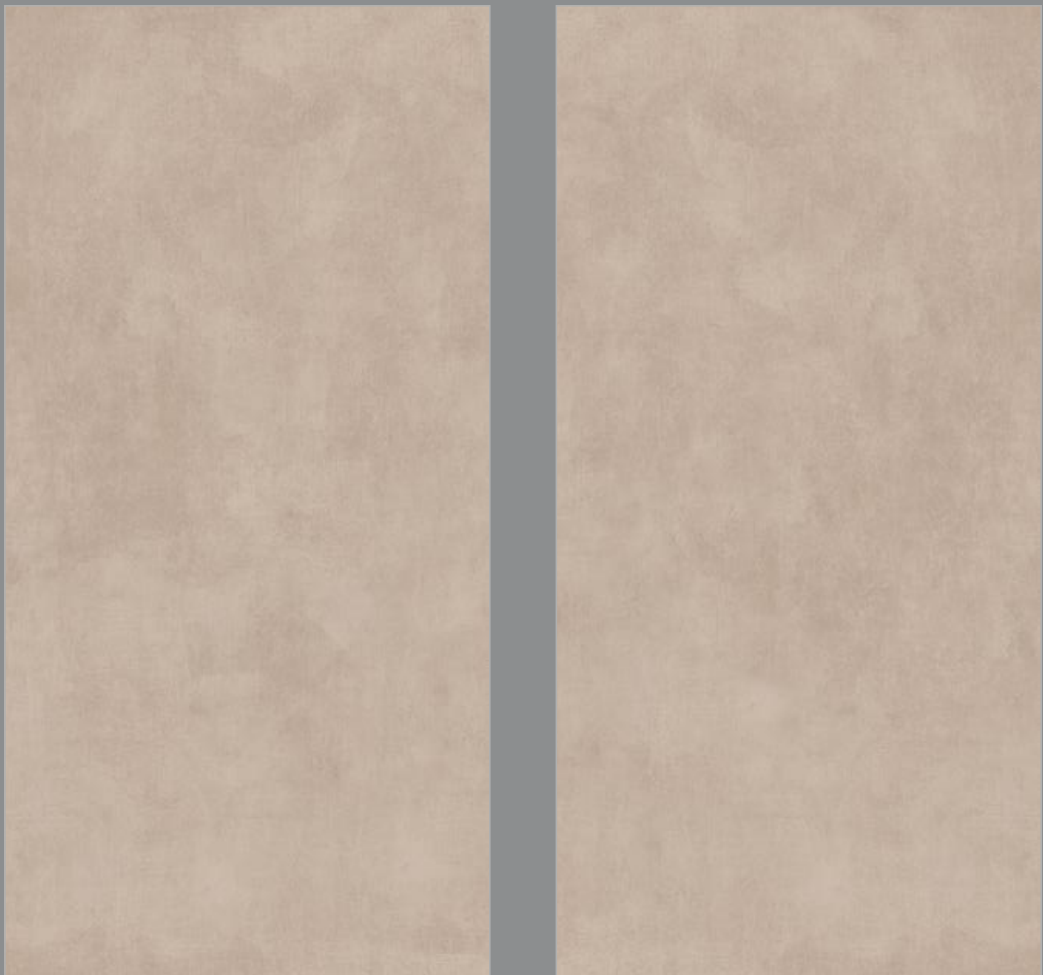
Random
2

Finish
Digi Matt

Thickness
5.5MM



Topaz
Dark Brown

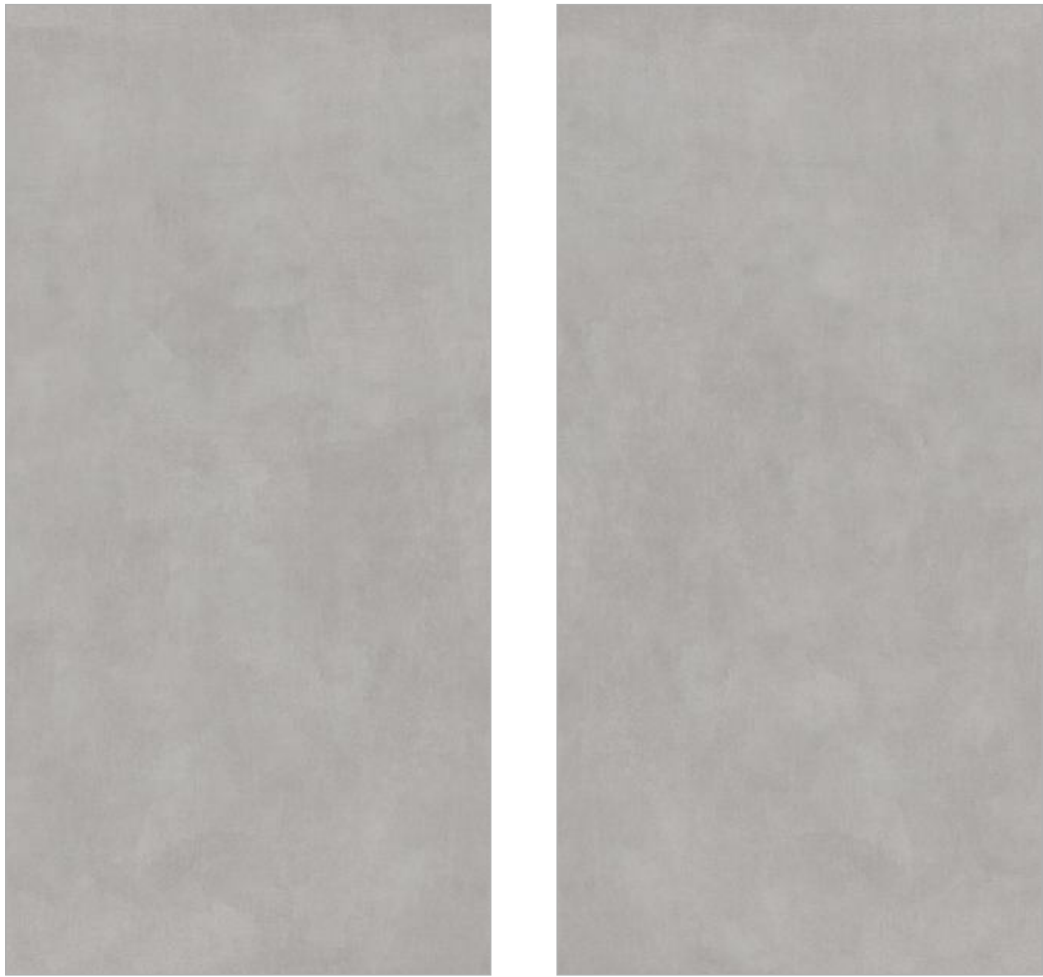


Features

-  Easy to install
-  Resistant to Staining
-  Impact resistant
-  High MOR
-  Thermal shock resistant
-  Ecology & Sustainable
-  Acid resistant
-  Easy to clean
-  Frost resistant

Topaz
Dark Grey

Size
600X1200MM
Random
2
Finish
Digi Matt
Thickness
5.5MM



Emcer®
MARMO DI CERAMICHE



éSLAB | STONIC
crafted differently

Features

- Easy to install
- Resistant to Staining
- Impact resistant
- High MOR
- Thermal shock resistant
- Ecology & Sustainable
- Acid resistant
- Easy to clean
- Frost resistant



Size
600X1200MM

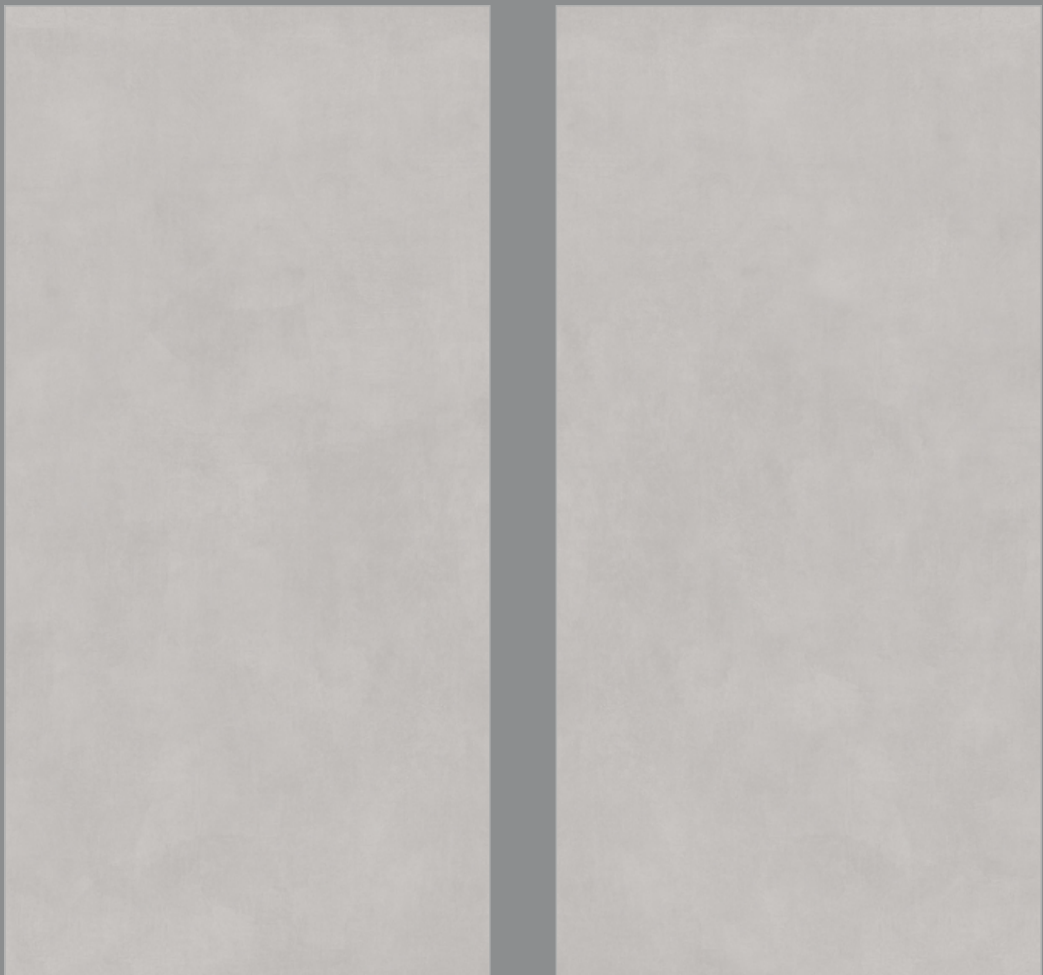
Random
2

Finish
Digi Matt

Thickness
5.5MM



Topaz
Light Grey



Features

- Easy to install
- Resistant to Staining
- Impact resistant
- High MOR
- Thermal shock resistant
- Ecology & Sustainable
- Acid resistant
- Easy to clean
- Frost resistant

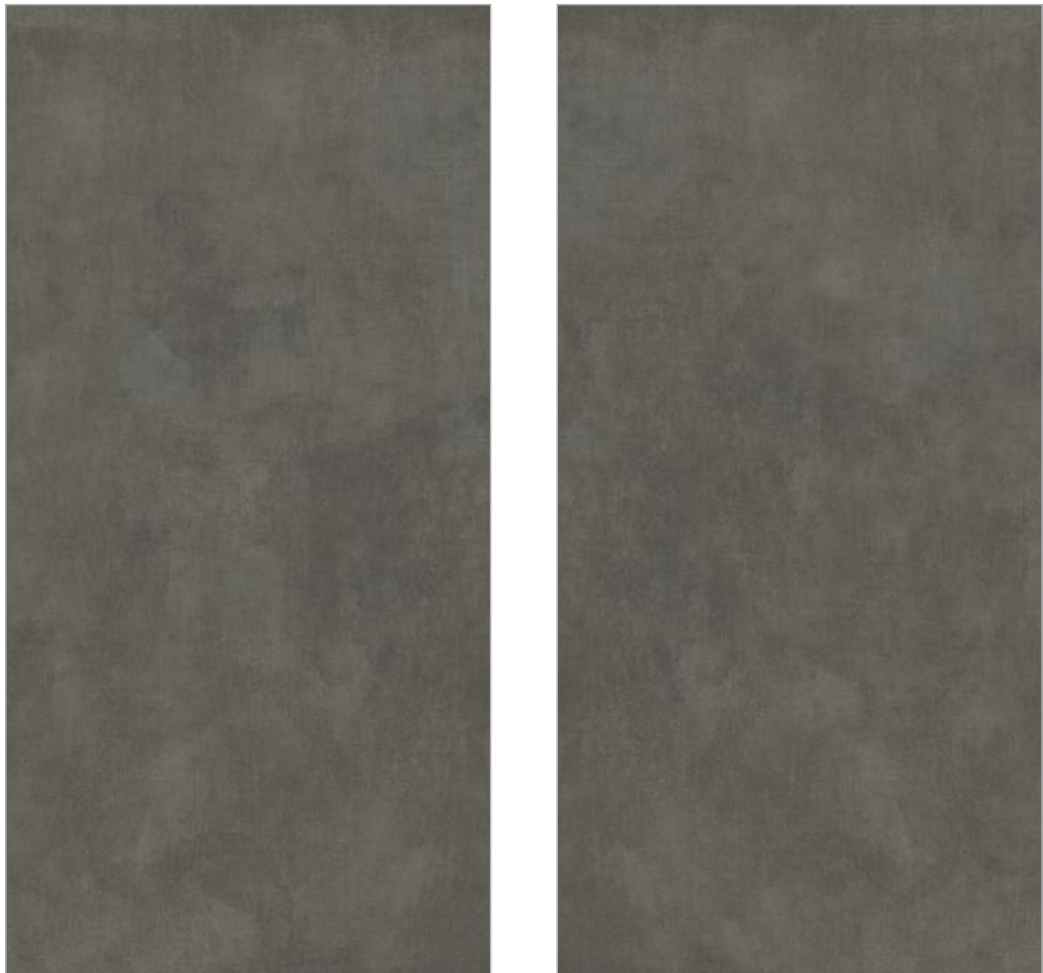
Topaz
Moca

Size
600X1200MM

Random
2

Finish
Digi Matt

Thickness
5.5MM



Emcer®
MARMO DI CERAMICHE



éSLAB | STONIC
crafted differently

Features

- Easy to install
- Resistant to Staining
- Impact resistant
- High MOR
- Thermal shock resistant
- Ecology & Sustainable
- Acid resistant
- Easy to clean
- Frost resistant



Size
600X1200MM

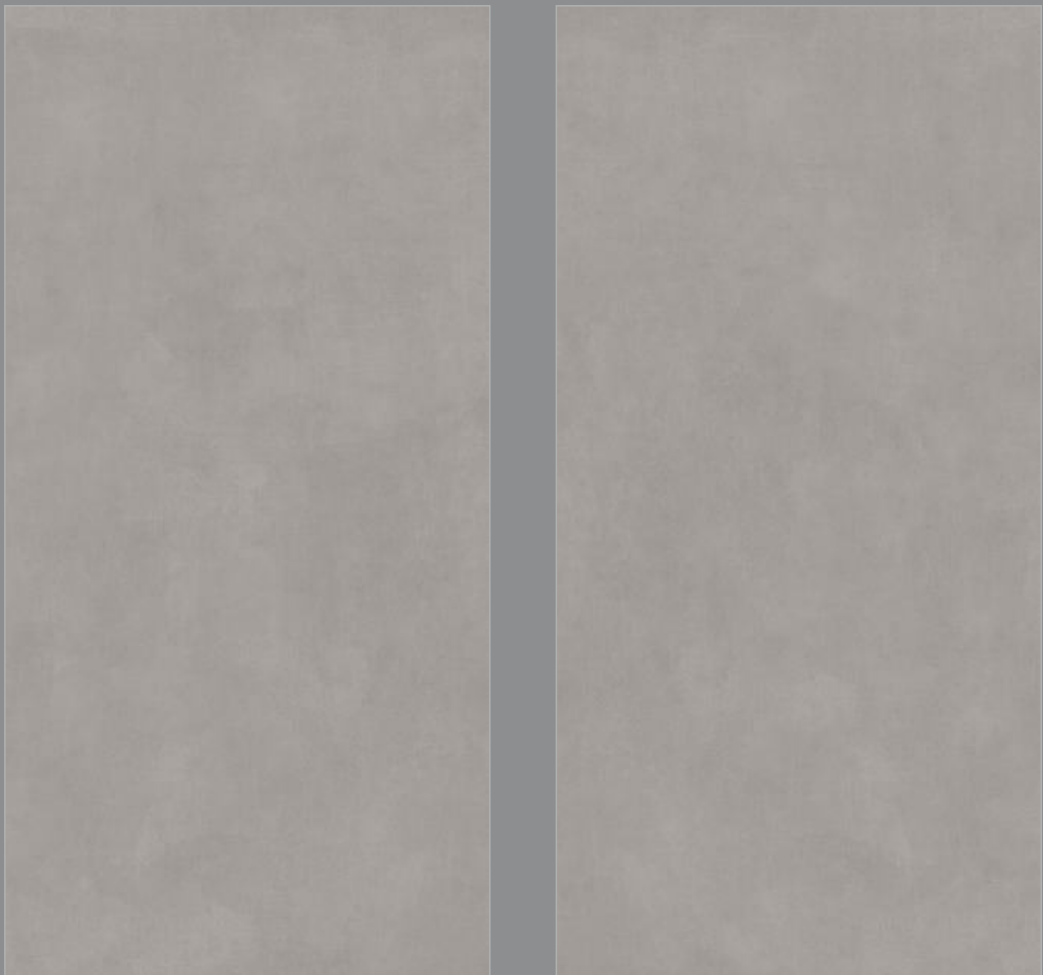
Finish
Digi Matt

Random
2

Thickness
5.5MM



Topaz Smoke



Features

-  Easy to install
-  Resistant to Staining
-  Impact resistant
-  High MOR
-  Thermal shock resistant
-  Ecology & Sustainable
-  Acid resistant
-  Easy to clean
-  Frost resistant



Size
600X1200MM

Random
2

Finish
Digi Matt

Thickness
5.5MM



Mount
Black



Mount
Bianco



Size
600X1200MM

Random
2

Finish
Digi Matt

Thickness
5.5MM

Features



Easy to
install



Resistant to
Staining



Impact resistant



High MOR



Thermal shock
resistant



Ecology &
Sustainable



Acid resistant



Easy to
clean



Frost
resistant



Size
600X1200MM

Random
2

Finish
Digi Matt

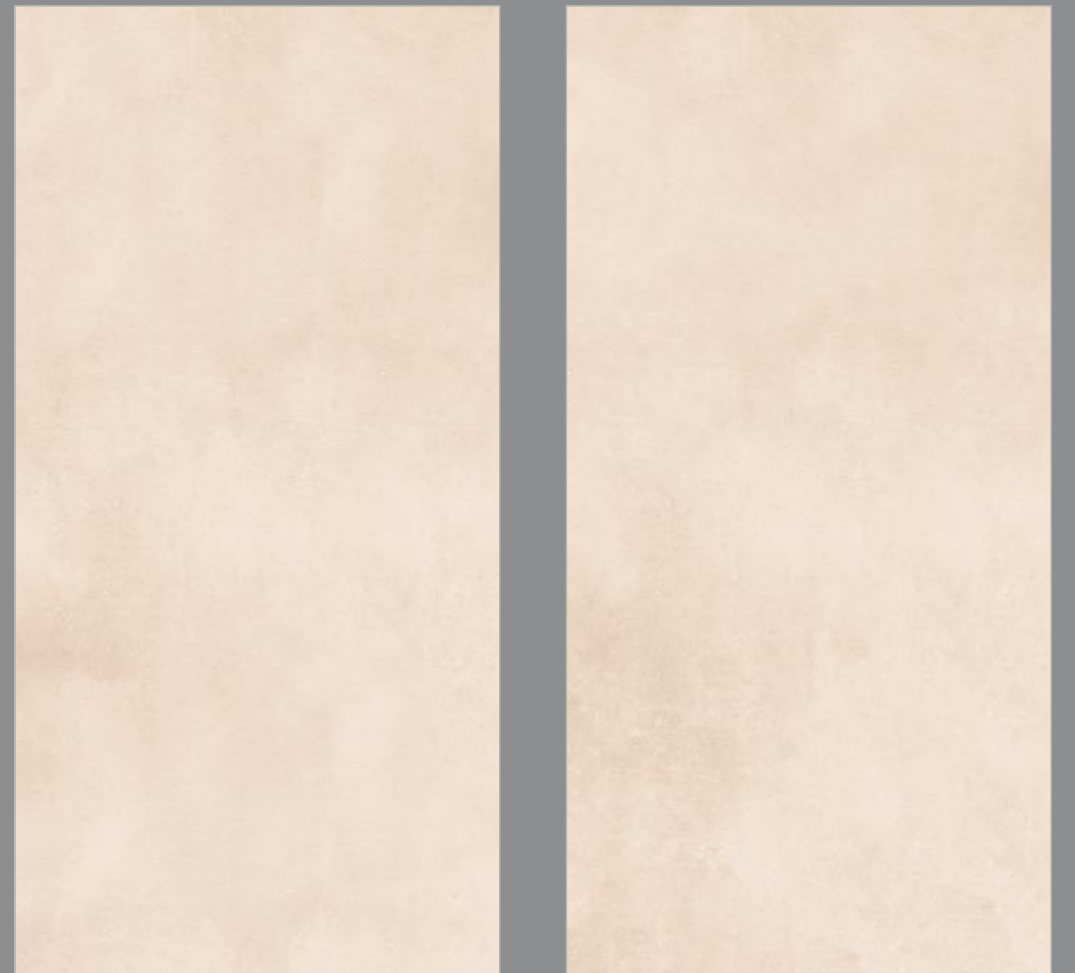
Thickness
5.5MM



Mount
Copper



Mount
Crema



Size
600X1200MM

Random
2

Finish
Digi Matt

Thickness
5.5MM

Features



Easy to
install



Resistant to
Staining



Impact resistant



High MOR



Thermal shock
resistant



Ecology &
Sustainable



Acid resistant



Easy to
clean



Frost
resistant



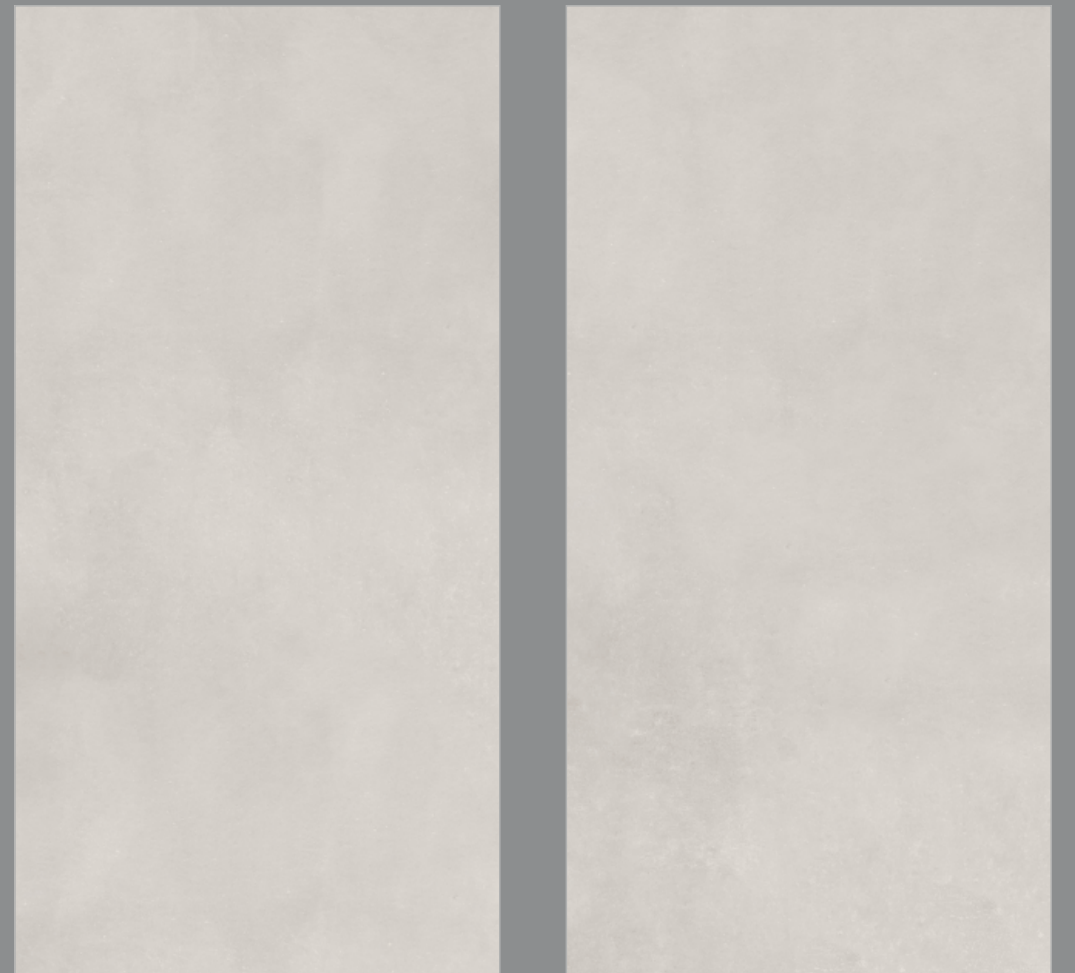
Size
600X1200MM
Random
2
Finish
Digi Matt
Thickness
5.5MM



Mount
Dark Grey



Mount
Grey



Size
600X1200MM
Random
2
Finish
Digi Matt
Thickness
5.5MM

Features



Easy to
install



Resistant to
Staining



Impact resistant



High MOR



Thermal shock
resistant



Ecology &
Sustainable



Acid resistant



Easy to
clean



Frost
resistant

Forest
Wood

Size
600X1200MM
Random
2
Finish
Digi Matt
Thickness
5.5MM



Emcer®
MARMO DI CERAMICHE



Features

- Easy to install
- Resistant to Staining
- Impact resistant
- High MOR
- Thermal shock resistant
- Ecology & Sustainable
- Acid resistant
- Easy to clean
- Frost resistant

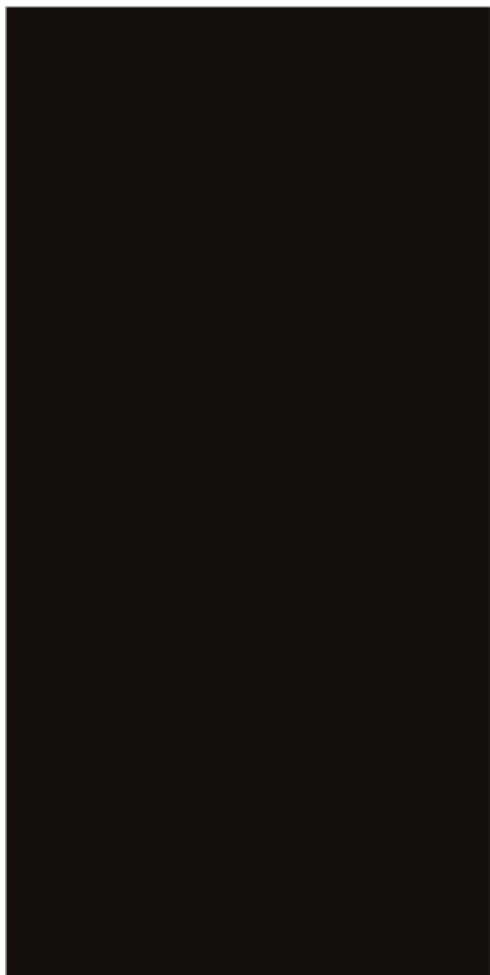
Emcer[®]
MARMO DI CERAMICHE

éSLAB
crafted differently

**600X
1200MM**
STONIC-e

www.emcer.in

Exotic
Black



Size
600X1200MM

Random
1

Finish
Solid Color Matt

Thickness
5.5MM

Emcer®
MARMO DI CERAMICHE



éSLAB | STONIC-e
crafted differently

Features

- Easy to install
- Resistant to Staining
- Impact resistant
- High MOR
- Thermal shock resistant
- Ecology & Sustainable
- Acid resistant
- Easy to clean
- Frost resistant



Size
600X1200MM

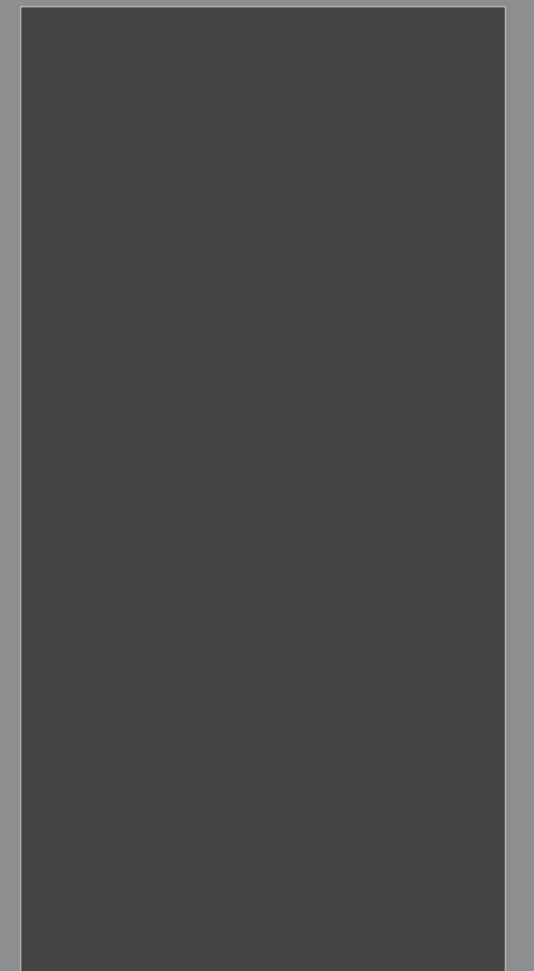
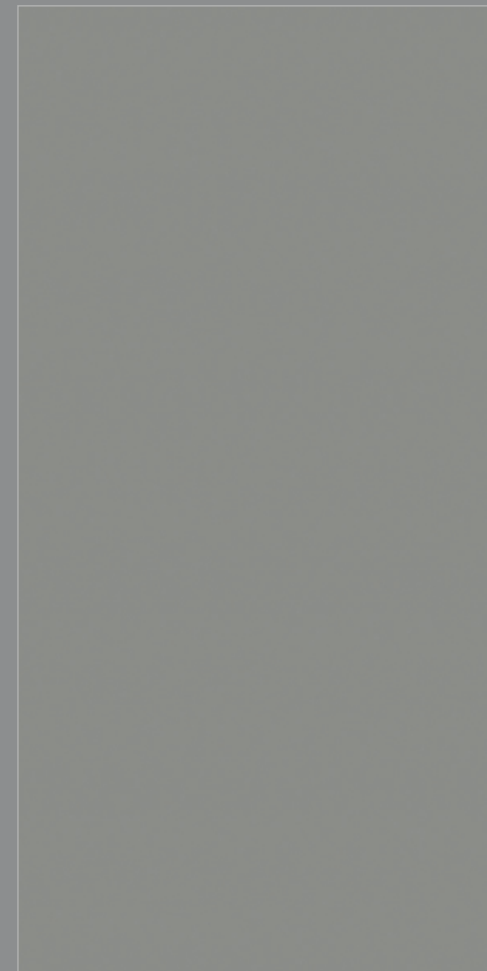
Random
2

Finish
Solid Color Matt

Thickness
5.5MM

Exotic
Grey

Exotic
Dark Grey



Features



Easy to
install



Resistant to
Staining



Impact resistant



High MOR



Thermal shock
resistant



Ecology &
Sustainable



Acid resistant



Easy to
clean



Frost
resistant



Size
600X1200MM

Finish
Solid Color Matt

Random
1

Thickness
5.5MM

Exotic
White



Features



Easy to
install



Resistant to
Staining



Impact resistant



High MOR



Thermal shock
resistant



Ecology &
Sustainable



Acid resistant



Easy to
clean



Frost
resistant

Size
600X1200MM

Random
1

Finish
Solid Color Matt

Thickness
5.5MM

**Exotic
Sparkle Black**

**Exotic
Sparkle Grey**



Features



Easy to
install



Resistant to
Staining



Impact resistant



High MOR



Thermal shock
resistant



Ecology &
Sustainable



Acid resistant

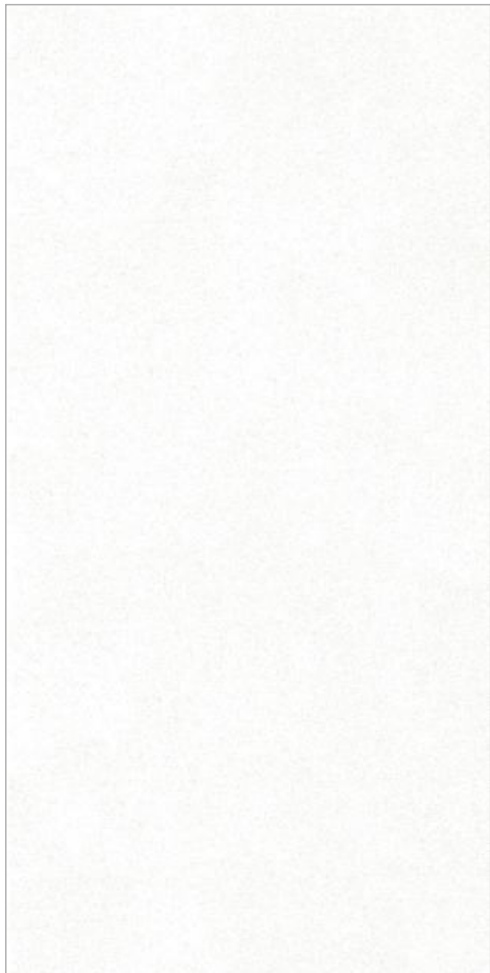


Easy to
clean



Frost
resistant

Exotic
Sparkle White



Size
600X1200MM

Finish
Solid Color Matt

Random
1

Thickness
5.5MM

Emcer®
MARMO DI CERAMICHE



éSLAB | STONIC-e
crafted differently

Features

- Easy to install
- Resistant to Staining
- Impact resistant
- High MOR
- Thermal shock resistant
- Ecology & Sustainable
- Acid resistant
- Easy to clean
- Frost resistant

ESLAB INSTALLATION INSTRUCTION

Follow the instruction for better and smooth execution of Emcer eSlab Products.

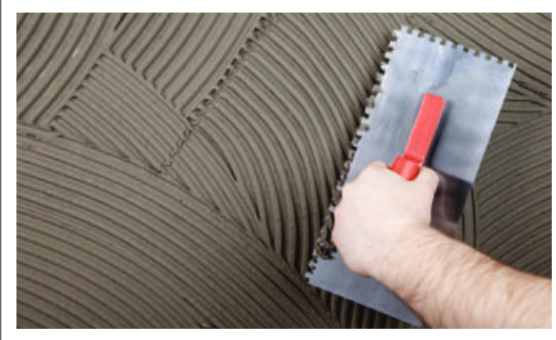


01

Apply cement mortar bedding on the surface and spread the entire mortar evenly. For flattened surface approximately 9mm thick cement mortar bedding is preferred.

02

The drying time of cement mortar bedding is approximately 48 hours, as it will exceed the contraction and expansion of feature of cement.



03

Apply approximately 10mm thick tile fixing adhesive on the prepared cement bed, spread the same by using metal comb (12mm) to the entire surface (Refer the image). This feature will allow to be fixed without any air pocket after installation.

The Same Method has to followed for applying the tile fixing adhesive on the back of the slab for 10mm, while holding the slab on its length side. Then, the adhesive has to be combed in the same way as done on the floor.



04 ESLAB HANDLING

eSlab can be properly handled and lifted by Vacuum cups. Vacuum cups are usually used to lift glasses, it can be fixed on the surface of polished tile, to lift it to the exact area of the fixing. (May not very effective for satin and matt surfaces.)

Once the slab is laid, the same has to be hammered by soft wooden base hammer to ensure proper laying and fixing.



05 ESLAB CUTTING AND HANDLING

Use diamond tools which are generally use to cut glasses, for cutting any surface of eSlab. First, a line has to be drawn on the surface pressing the tool considerably to ensure a deep cut mark line and this can be used till the slab is cut deep to the level of 1 to 2mm and then can be cut with a proper cutting tool for cutting the 9mm thick body of the slab. Cutting systems are also available with companies manufacturing such systems.

06 ESLAB CUTTING AND DRILLING METHODS



ESLAB CARE AND MAINTENANCE

These are the so-called final cleaning operations: this is the most important step, as it influences the results of the subsequent use of the product. Its purpose is to remove any trace or residue of foreign matter from the surface of the slabs. If you have used a cement-based sealant during installation, once the grout has dried, Emcer recommends carrying out the following operations:

- Remove any coarse dirt using a vacuum cleaner;
- Wet the floor with clean water in order to soak and protect the joints against the corrosive action of the detergent;
- Clean using a suitable acid detergent, which can be applied by hand (with a clean cloth) or with a machine (a single-brush machine with medium, non-abrasive bristles or a high-pressure water cleaner);
- Soak up the cleaning solution with a clean cloth or a suitable vacuum cleaner;
- Thoroughly rinse surfaces with clean, warm water to neutralise the action of the detergent;
- Remove any build-up by scraping it off;
- If needed, clean the surface again with the single-brush machine, using a diluted neutral or alkaline detergent, then rinse using clean warm water and dry.
- If an epoxy sealant has been used during installation of the product, given the chemical nature of such product, any remaining residue on the porcelain tile’s surface should be removed before the grout has hardened completely and carefully follow the instructions supplied by the manufacturer.



Technical Specification

CHARACTERISTICS	STANDARD AS PER ISO-13006/En14411 GROUP	VALUES	TEST METHOD
REGULATORY PROPERTIES			
Deviation in Lenth & Width	0.50%	0.20%	ISO - 10545-2
Deviation in Thickness	0.50%	0.50%	ISO - 10545-2
Straightness of Sides	0.50%	0.20%	ISO - 10545-2
Rectangularity	0.50%	0.20%	ISO - 10545-2
Surface Flatness	0.50%	0.20%	ISO - 10545-2
Color Difference	Unaltered	No Change	ISO - 10545-16
Glossiness	As per Mfg.	>90%	Glossmeter
STRUCTURAL PROPERTIES			
Water Absorption	<0.05%	<0.05%	ISO - 10545-3
Apparent Density	>2.00 g/cc	>2.10 g/cc	DIN 51082
MASSIVE MECHANICAL PROPERTIES			
Modulus of Repture	Min 35N/MM2	Min 40N/MM2	ISO - 10545-4
Breaking Strength	Min. 1300 N	Min. 2000 N	ISO - 10545-4
Impact Resistance	As per Mfg.	Min. 0.55	ISO - 10545-5
SURFACE MECHANICAL PROPERTIES			
Surface Abrasion Resistance	As per Mfg.	Min. class 3	ISO - 10545-7
Moh's Hardness	As per Mfg.	Min. class 4	EN 101
THERMO HYGROMETRIC PROPERTIES			
Frost Resistance	No Damage	No Damage	ISO - 10545-12
Thermal Shock Resistance	No Damage	No Damage	ISO - 10545-09
Moisture Expansion	Nil	Nil	ISO - 10545-10
Thermal Expansion	Max 9.0x10 -6	Max 6.5x10 -6	ISO - 10545-08
Crazing Resistance	As per Mfg.	Min 10 Cycle	ISO - 10545-11
CHEMICAL PROPERTIES			
Chemical Resistance	No Damage	No Damage	ISO - 10545-13
Stain Resistance	Resistant	Resistant	ISO - 10545-14
SAFETY PROPERTIES			
Slip Resistance	As per Mfg.	>0.40	ISO - 10545-17
Fire Resistance	As per Mfg.	Fire Proof	N.A.

Packing Detail

SIZE (in mm)	THICKNESS APPROX	PIECES / PER BOX	COVERAGE AREA IN SQ. FT	BOX WEIGHT (APPROX.)
600X1200MM	5.5MM	3	23.25	30 KGS.
600X1200MM	9MM	2	15.50	34 KGS.

Certifications



NOTE: Colour Shown are as accurate as the limitations of the printing process will allow. Prospective Customer are advised to inspect a sample of tiles before ordering. every effort has been made to ensure the accuracy of the information given. However, the Company research the right to change the specifications Without prior notice. Sometimes variations in shade or size being inherent to ceramic industry may occur. Before fixing, we advice you to follow the fixing Instruction on the cartons of the tiles as no responsibility can be accepted by the once the tiles have been fixed.



EMCER TILES PVT. LTD.

HEAD OFFICE

702-703, Iscon Elegance, Near Shapath V, S.G. Highway,
Ahmedabad - 380015, (Gujarat) INDIA.

EMCER FACTORY

Emcer Premises, Survey No.: 117 P2 & P3, Opp. Sanford Vitrified,
Sartanpar Road, Ta.: Wankaner, Dist.: Morbi - 363621 (Gujarat) INDIA.

EMCER DELHI

Emcer House, D 19, Mayapuri Industrial Area Phase 2,
New Delhi - 110064, INDIA.

EMCER KOLKATA

5, Paschim Chaubhaga, Arupota, Post Dalanda,
Besides Mercedes Service Center, Kolkata - 700105 (West Bengal), INDIA.